



“Self-heating” enabled one-pot synthesis of fluorescent carbon dots

Xiaoyu Ma, ^{a*} Wei Zhong, ^b Jing Zhao, ^c Steve L. Suib, ^{b,c} Yu Lei ^{a,d*}

¹ Department of Biomedical Engineering, University of Connecticut, 06269

² Institute of Materials Science, University of Connecticut, 06269

³ Department of Chemistry, University of Connecticut, 06269

⁴ Department of Chemical and Biomolecular Engineering, University of Connecticut,
06269

* To whom correspondence should be addressed:

Yu Lei, Email: yu.lei@uconn.edu; Xiaoyu Ma, Email: xiaoyu.ma@uconn.edu.

Tel: 1-860-486-4554 Fax: 1-860-486-2959

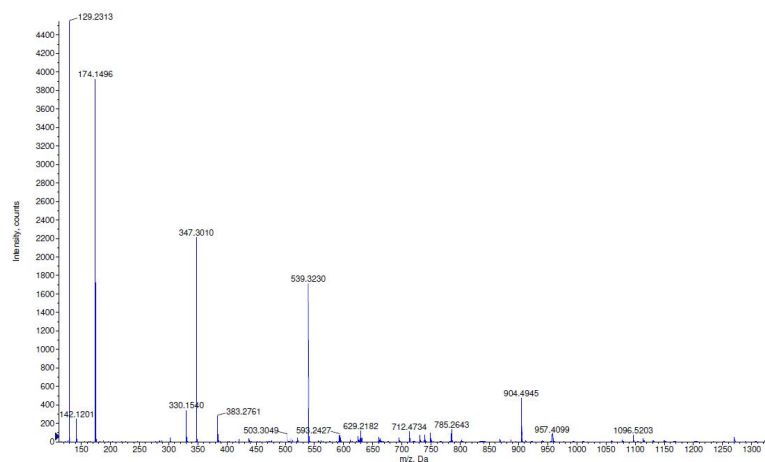


Figure S1. ESI-MS spectrum of the as-prepared CDs sample.

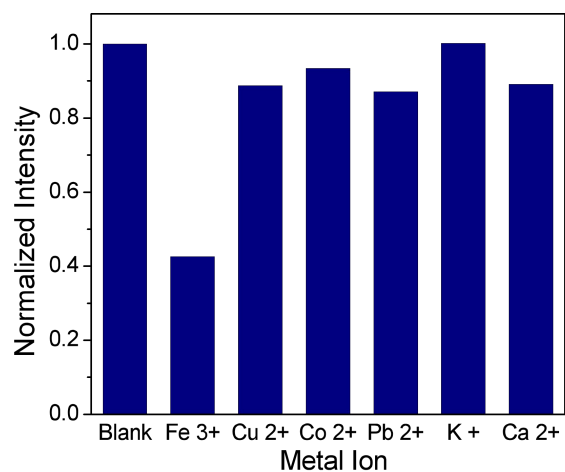


Figure S2. The normalized fluorescence intensity of CDs with 1 mM metal ions, indicating high selectivity of CDs toward Fe³⁺ detection.